

Email: info@Scienzainfiore.it - PEC: amministrazione@pec.scienzainfiore.it

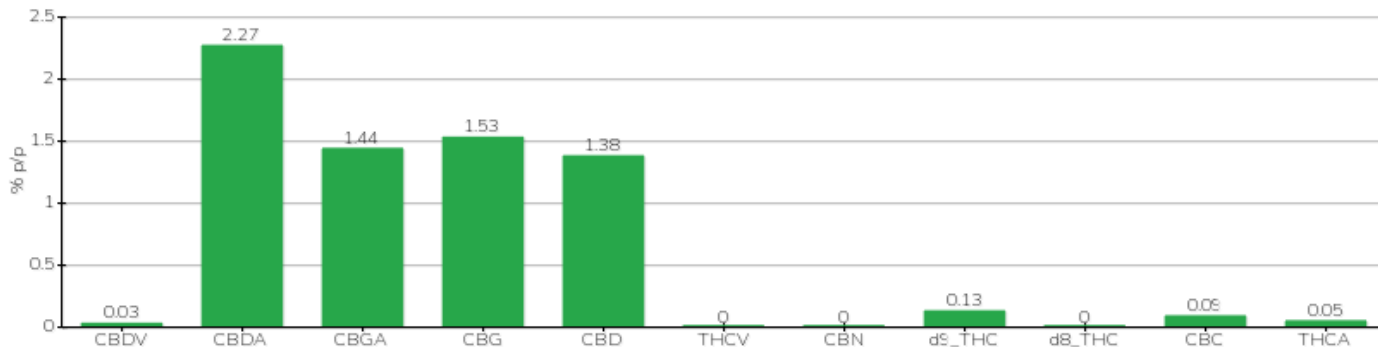
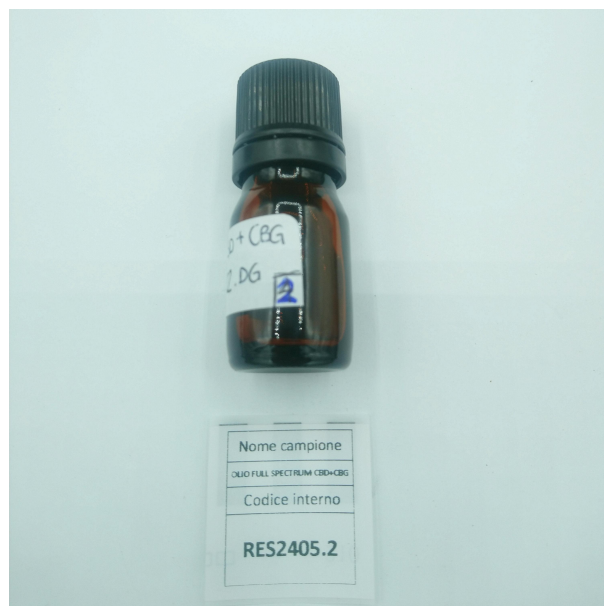
TECHNICAL REPORT

Committente	RESAPURA SRL	Etichetta	OLIO FULL SPECTRUM CBD+CBG
Data accettazione	24/05/2022	Tipologia campione	semilavorato
Data analisi	26/05/2022	varietà	Eletta Campana
Codice riferimento interno	RES2405.2	N. Cartellino	1071300109285
Metodica analitica	HPLC - HS - Rev.2	Campionamento	a cura del cliente
Lotto	D710522.DG		

Note

Parametro	% p/p	Metodo
CBDV	0.03%	HPLC-UV
CBDA	2.27%	HPLC-UV
CBGA	1.44%	HPLC-UV
CBG	1.53%	HPLC-UV
CBD	1.38%	HPLC-UV
THCV	<0.01%	HPLC-UV
CBN	<0.01%	HPLC-UV
d9_THC	0.13%	HPLC-UV
d8_THC	<0.01%	HPLC-UV
CBC	0.09%	HPLC-UV
THCA	0.05%	HPLC-UV
CBD TOTALE	3.37%	CALCOLATO
CBG TOTALE	2.79%	CALCOLATO
THC TOTALE	0.18%	CALCOLATO

CAMPIONE ANALIZZATO: Eletta Campana(5.00gr)



Pineto

27/05/2022