

Email: info@Scienzainfiore.it - PEC: amministrazione@pec.scienzainfiore.it

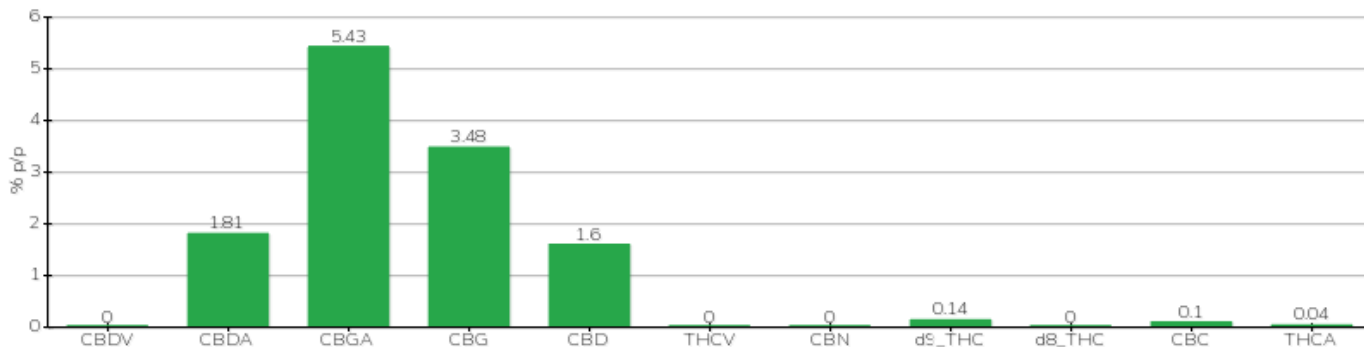
# TECHNICAL REPORT

<b>Committente</b>	RESAPURA SRL	<b>Etichetta</b>	OLIO FULL SPECTRUM CBD + CBG
<b>Data accettazione</b>	22/06/2022	<b>Tipologia campione</b>	semilavorato
<b>Data analisi</b>	23/06/2022	<b>varietà</b>	Eletta Campana
<b>Codice riferimento interno</b>	RES2206.1	<b>N. Cartellino</b>	974400542013
<b>Metodica analitica</b>	HPLC - HS - Rev.2	<b>Campionamento</b>	a cura del cliente
<b>Lotto</b>	D590522.8		

**Note**

Parametro	% p/p	Metodo
CBDV	<0.01%	HPLC-UV
CBDA	1.81%	HPLC-UV
CBGA	5.43%	HPLC-UV
CBG	3.48%	HPLC-UV
CBD	1.60%	HPLC-UV
THCV	<0.01%	HPLC-UV
CBN	<0.01%	HPLC-UV
d9_THC	0.14%	HPLC-UV
d8_THC	<0.01%	HPLC-UV
CBC	0.10%	HPLC-UV
THCA	0.04%	HPLC-UV
<b>CBD TOTALE</b>	<b>3.19%</b>	<b>CALCOLATO</b>
<b>CBG TOTALE</b>	<b>8.24%</b>	<b>CALCOLATO</b>
<b>THC TOTALE</b>	<b>0.17%</b>	<b>CALCOLATO</b>

CAMPIONE ANALIZZATO: Eletta Campana(5.00gr)



Pineto

27/06/2022